
RevPi SlideShow Autostart

Dirk Conzelmann
KUNBUS GmbH / Support

INHALT

[Description](#)

[Install LibreOffice](#)

[Autostart a LibreOffice slideshow](#)

[Copy your presentation](#)

[Configure the SFTP connection](#)

[Connect to the RevPi](#)

[Switch folder](#)

[Copy presentation](#)

[Close FileZilla](#)

[Configure the device](#)

[3 Boot Options](#)

[B1 Desktop / CLI](#)

[B4 Desktop Autologin](#)

[5 Interfacing Options](#)

[P3 VNC](#)

[Enable VNC Server - Yes](#)

[OK](#)

[Finish](#)

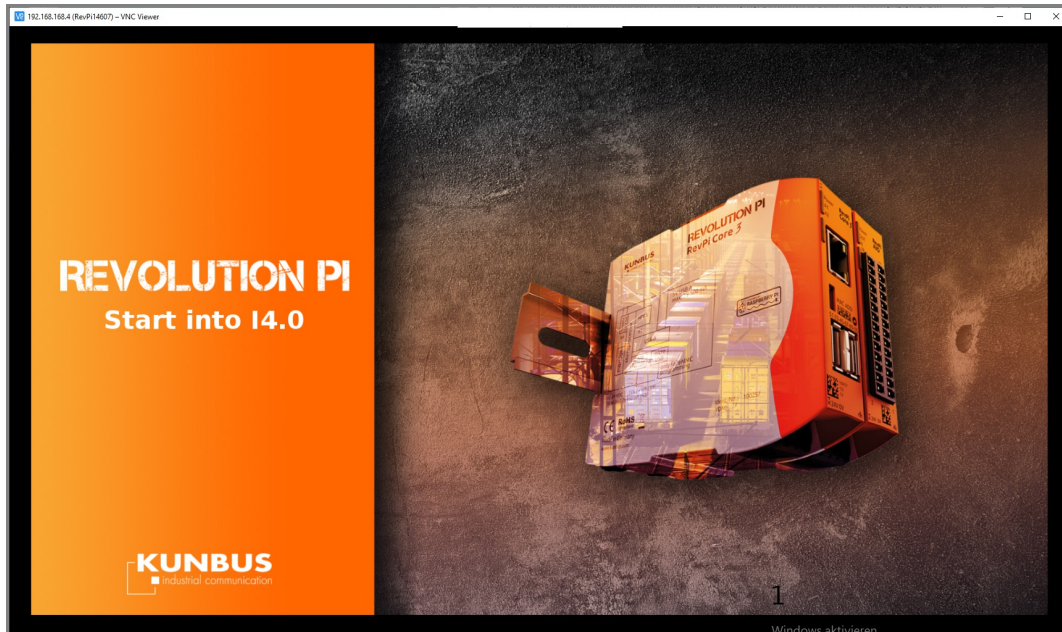
[Reboot](#)

[Start VNC Viewer](#)

[Input Credentials](#)

[Done](#)

Description



1.

The aim is to configure the RevPi so that a slideshow is automatically started on boot.

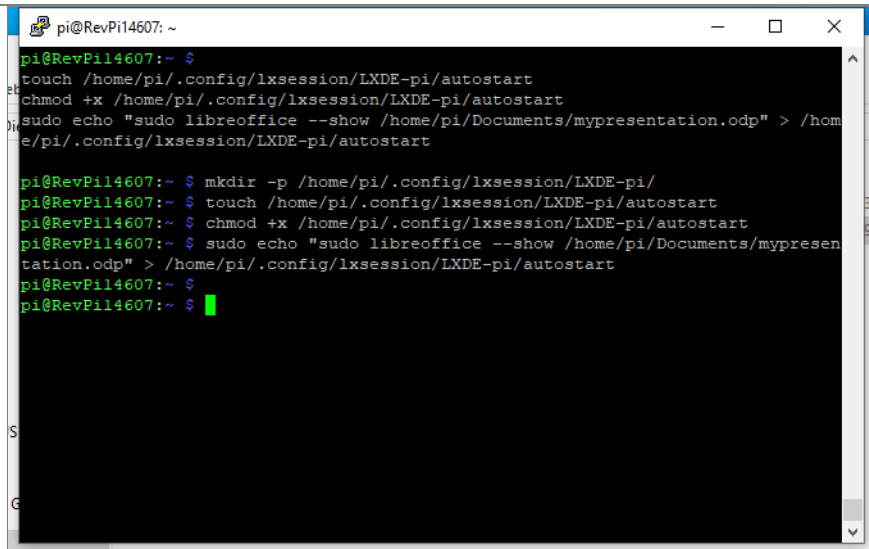
Install LibreOffice

```
pi@RevPi14607: ~  
Reading package lists... Done  
W: An error occurred during the signature verification. The repository is not up  
dated and the previous index files will be used. GPG error: https://teamviewer-r  
evpi.teamviewer.com/deb tvstable InRelease: The following signatures were invali  
d: EXPKEYSIG 65BAA73C1E9B5B61 TeamViewer GmbH (TeamViewer IoT 2017) <support@tea  
mviewer.com>  
W: Failed to fetch http://teamviewer-revpi.teamviewer.com/deb/dists/tvstable/InR  
elease The following signatures were invalid: EXPKEYSIG 65BAA73C1E9B5B61 TeamVi  
ewer GmbH (TeamViewer IoT 2017) <support@teamviewer.com>  
W: Some index files failed to download. They have been ignored, or old ones used  
instead.  
pi@RevPi14607:~ $ sudo apt-get install libreoffice  
Reading package lists... Done  
Building dependency tree  
Reading state information... Done  
libreoffice is already the newest version (1:5.2.7-1+rpil+deb9u9).  
The following packages were automatically installed and are no longer required:  
  galculator leafpad libbluetooth3 libmicrodns0 libpng-tools  
  libprotobuf-lite10 libproxy-tools libqt5xmlextras5 libva-wayland1 libxcb-xv0  
  lxappearance lxappearance-obconf lxhotkey-core lxhotkey-gtk xarchiver  
  zlib1g-dev  
Use 'sudo apt autoremove' to remove them.  
0 upgraded, 0 newly installed, 0 to remove and 129 not upgraded.  
pi@RevPi14607:~ $
```

2.

```
sudo apt-get update  
sudo apt-get install libreoffice
```

Autostart a LibreOffice slideshow

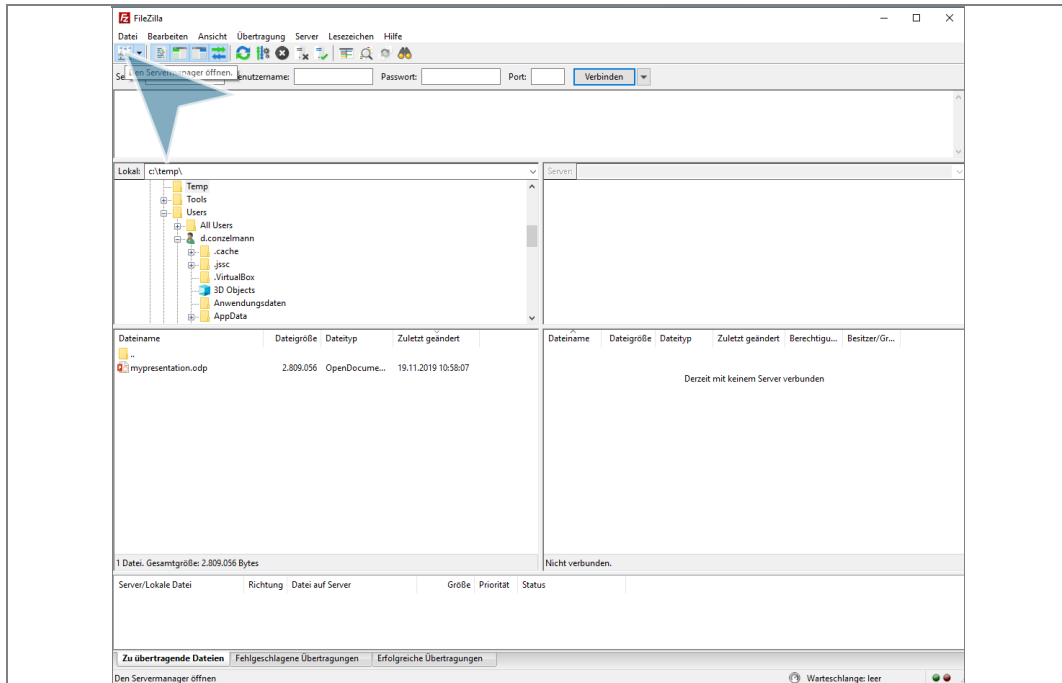


```
pi@RevPi14607: ~  
pi@RevPi14607:~ $ touch /home/pi/.config/lxsession/LXDE-pi/autostart  
pi@RevPi14607:~ $ chmod +x /home/pi/.config/lxsession/LXDE-pi/autostart  
pi@RevPi14607:~ $ sudo echo "sudo libreoffice --show /home/pi/Documents/mypresentation.odp" > /home/pi/.config/lxsession/LXDE-pi/autostart  
  
pi@RevPi14607:~ $ mkdir -p /home/pi/.config/lxsession/LXDE-pi/  
pi@RevPi14607:~ $ touch /home/pi/.config/lxsession/LXDE-pi/autostart  
pi@RevPi14607:~ $ chmod +x /home/pi/.config/lxsession/LXDE-pi/autostart  
pi@RevPi14607:~ $ sudo echo "sudo libreoffice --show /home/pi/Documents/mypresentation.odp" > /home/pi/.config/lxsession/LXDE-pi/autostart  
pi@RevPi14607:~ $  
pi@RevPi14607:~ $
```

3.

```
mkdir -p /home/pi/.config/lxsession/LXDE-pi/  
touch /home/pi/.config/lxsession/LXDE-pi/autostart  
chmod +x /home/pi/.config/lxsession/LXDE-pi/autostart  
sudo echo "sudo libreoffice --show  
/home/pi/Documents/mypresentation.odp" >  
/home/pi/.config/lxsession/LXDE-pi/autostart
```

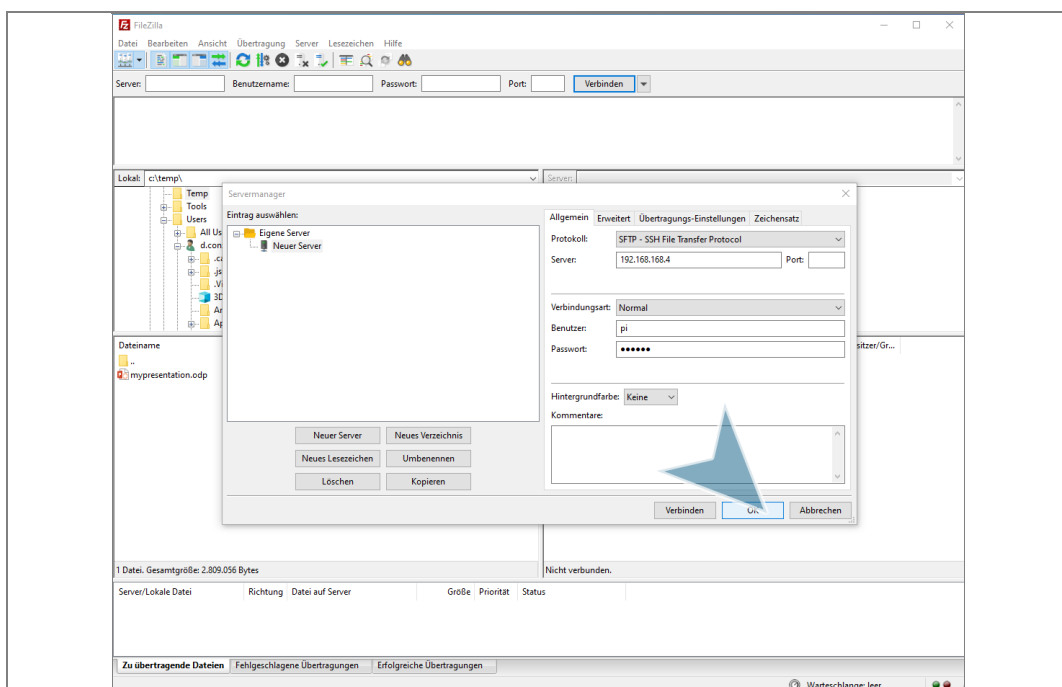
Copy your presentation



4.

Open FileZilla

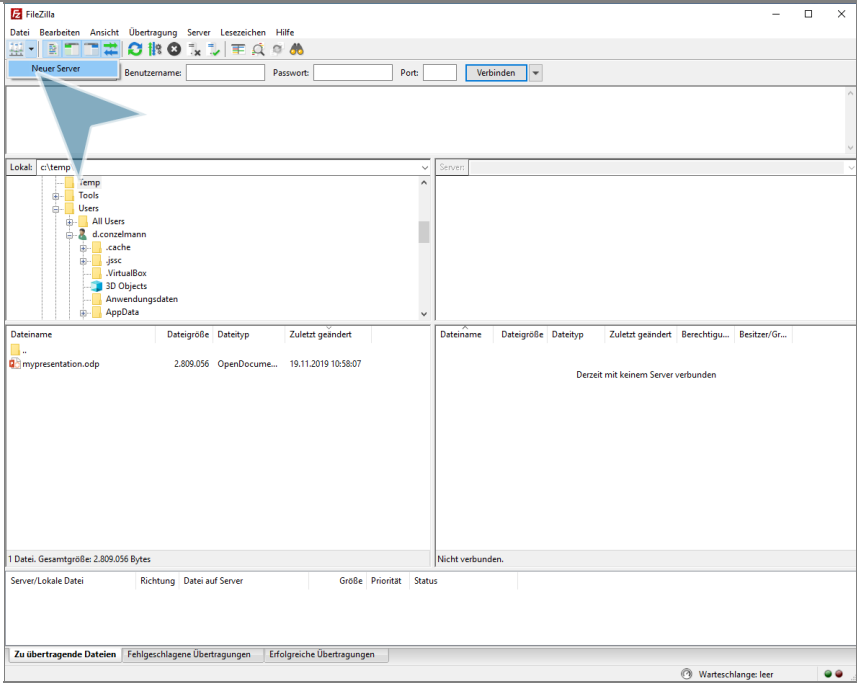
Configure the SFTP connection



5.

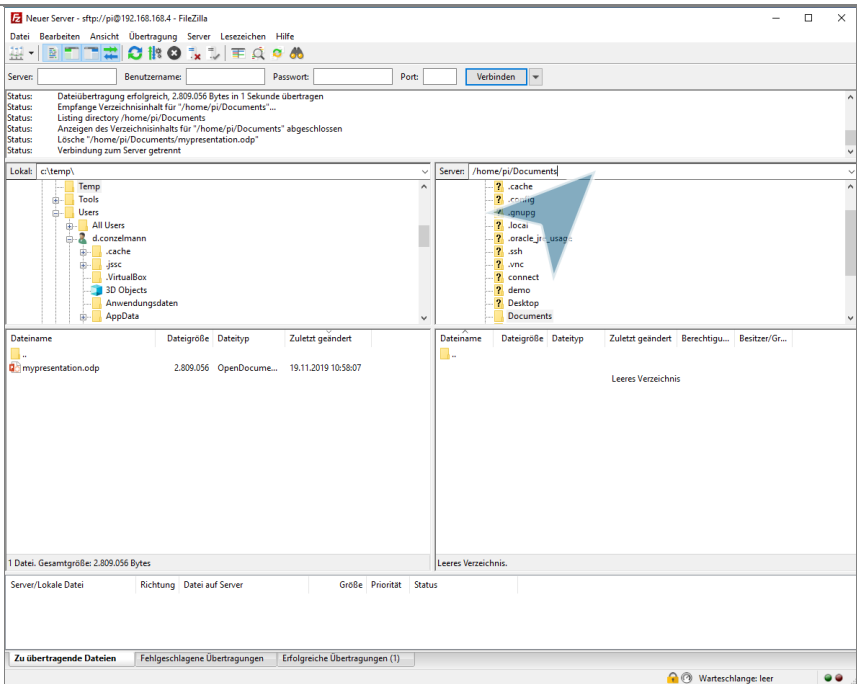
Configure Protocol-SFTP, IP, username and password

Connect to the RevPi



6.

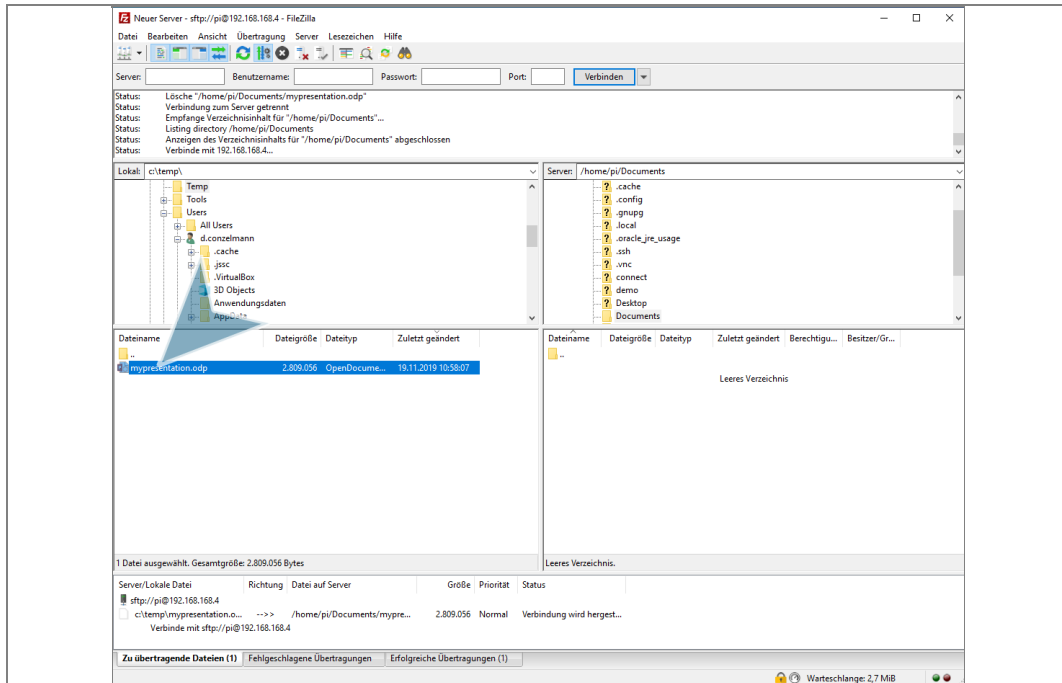
Switch folder



7.

go to `"/home/pi/Documents/"`

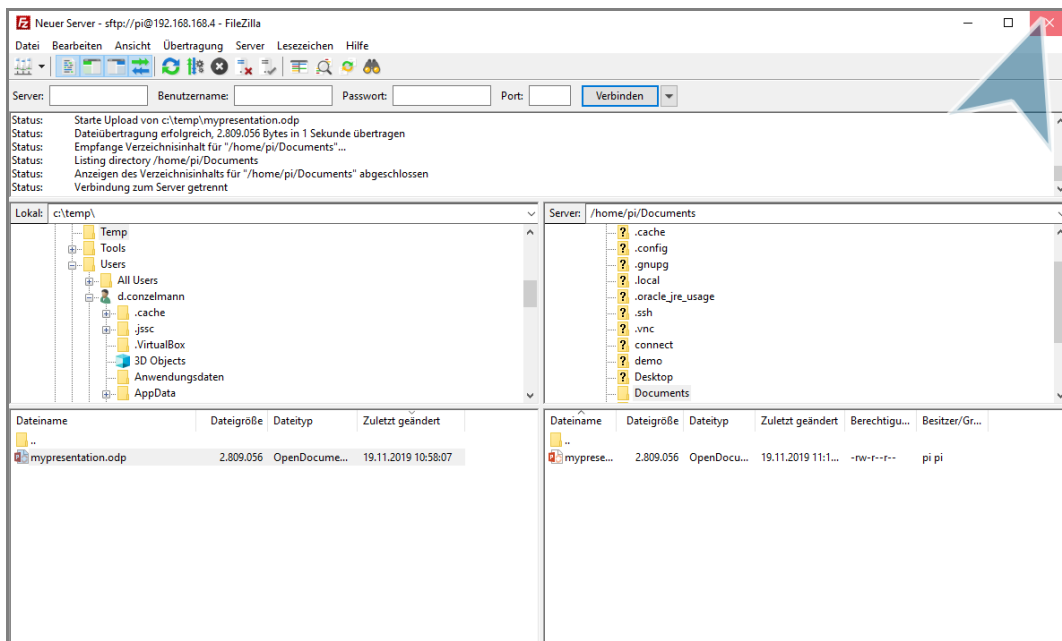
Copy presentation



8.

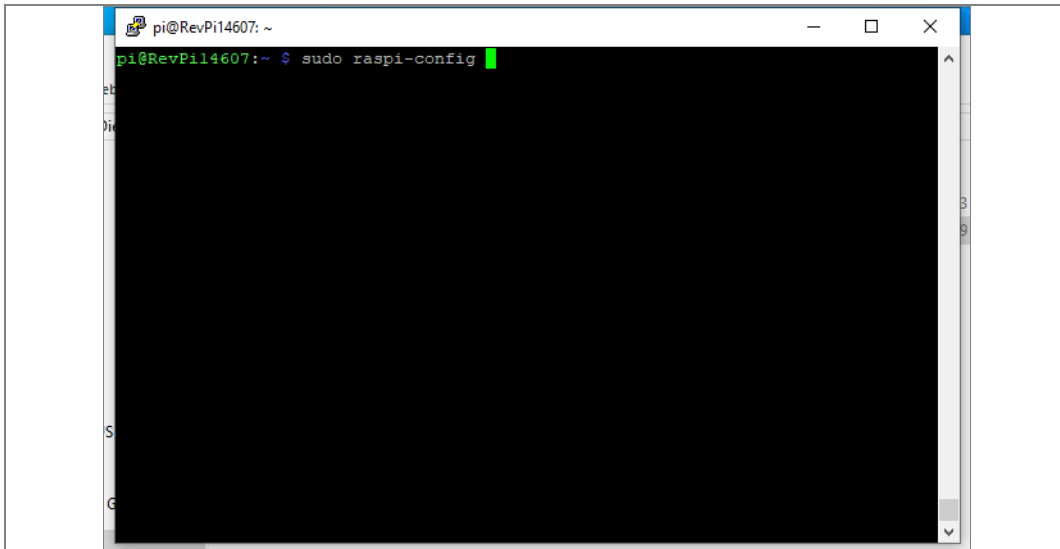
Doppleclick „mypresentation.odp“.

Close FileZilla



9.

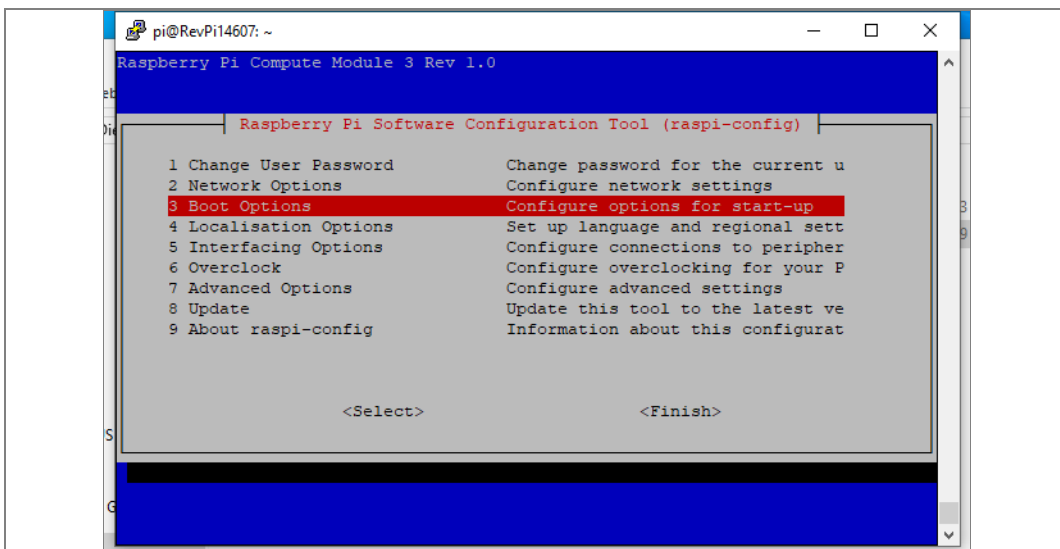
Configure the device



10.

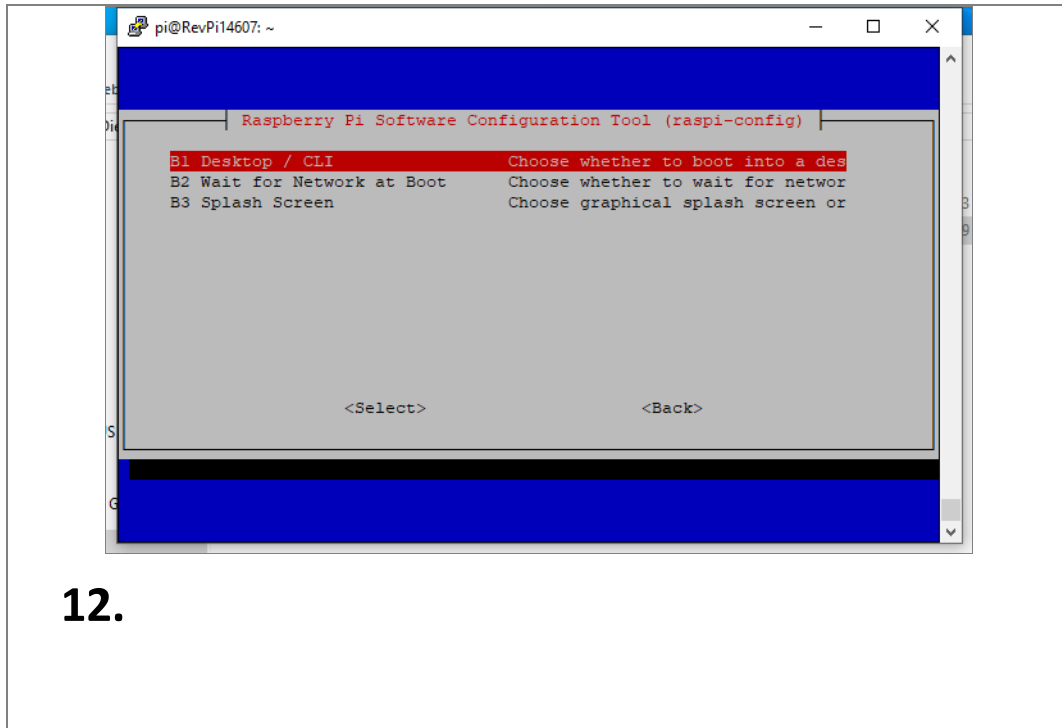
sudo raspi-config

3 Boot Options

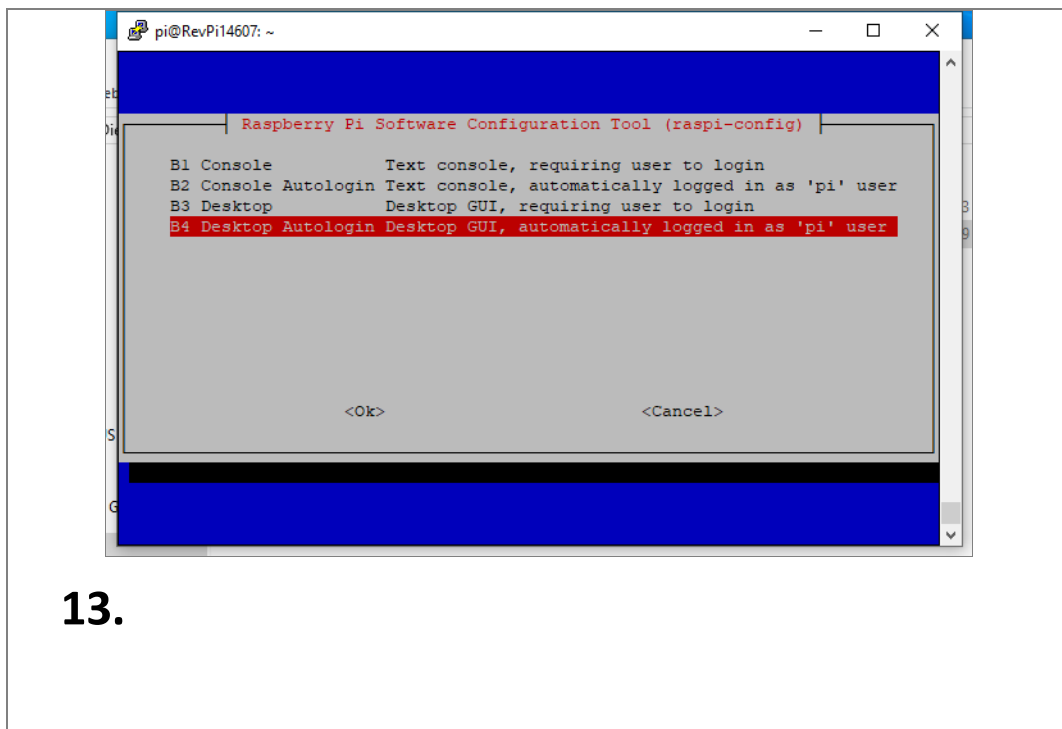


11.

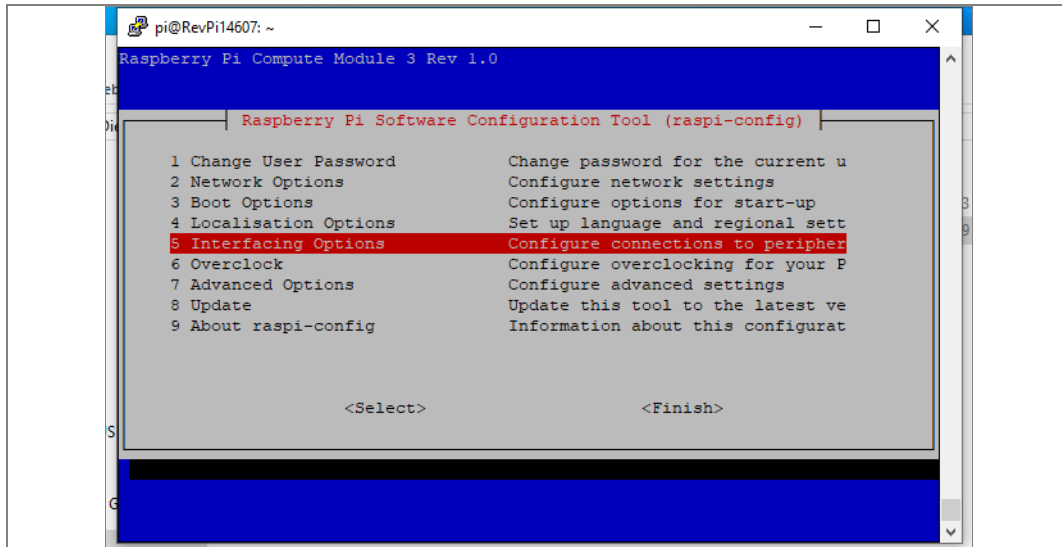
B1 Desktop / CLI



B4 Desktop Autologin



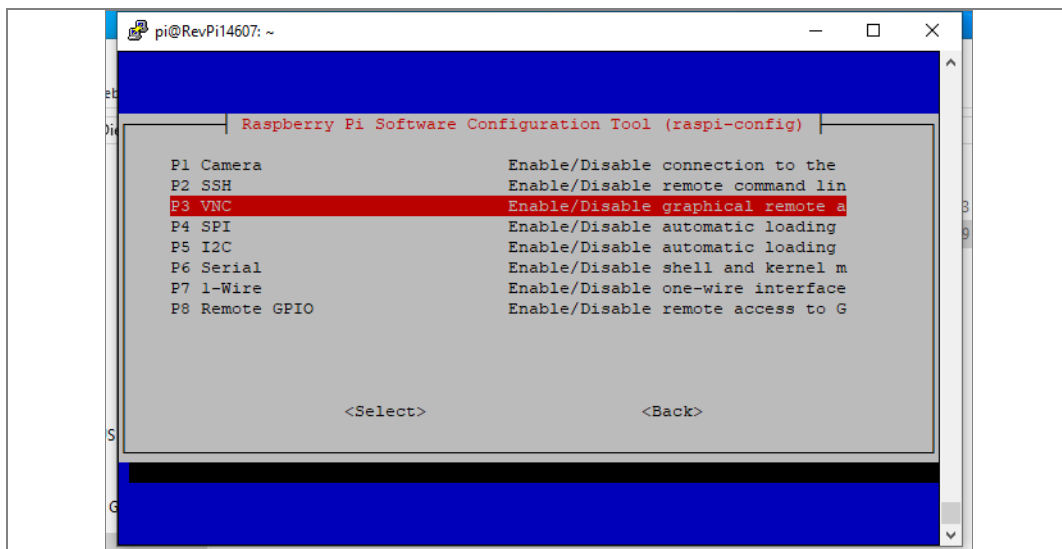
5 Interfacing Options



14.

Run the VNC Server (Optional)

P3 VNC

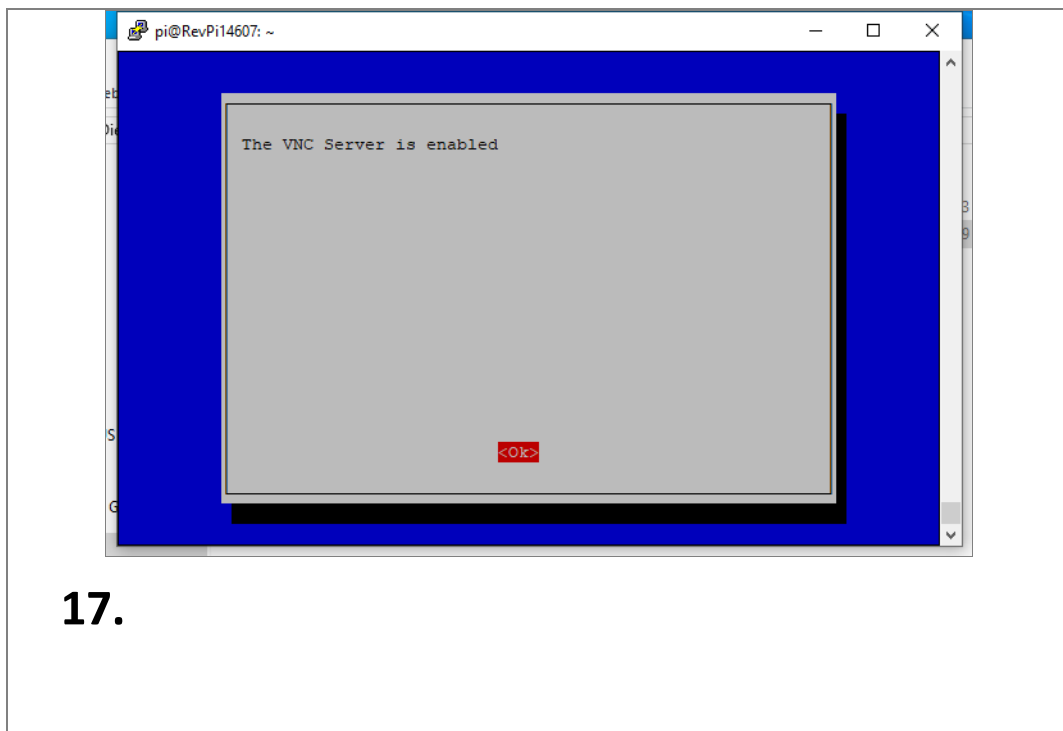


15.

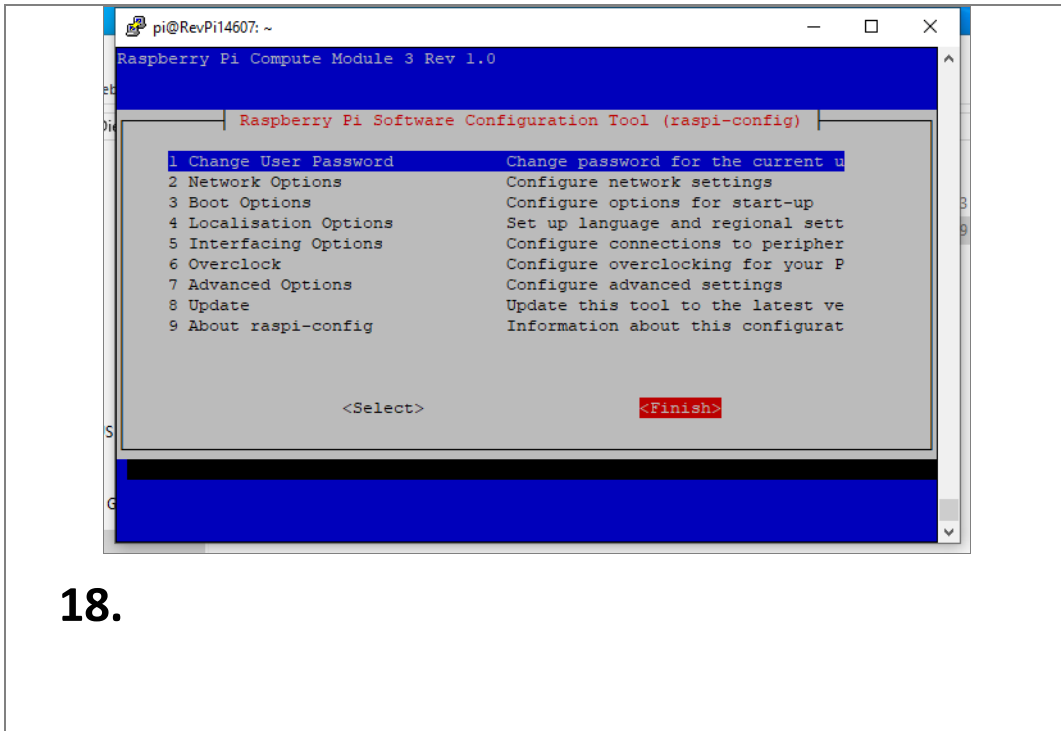
Enable VNC Server - Yes



OK



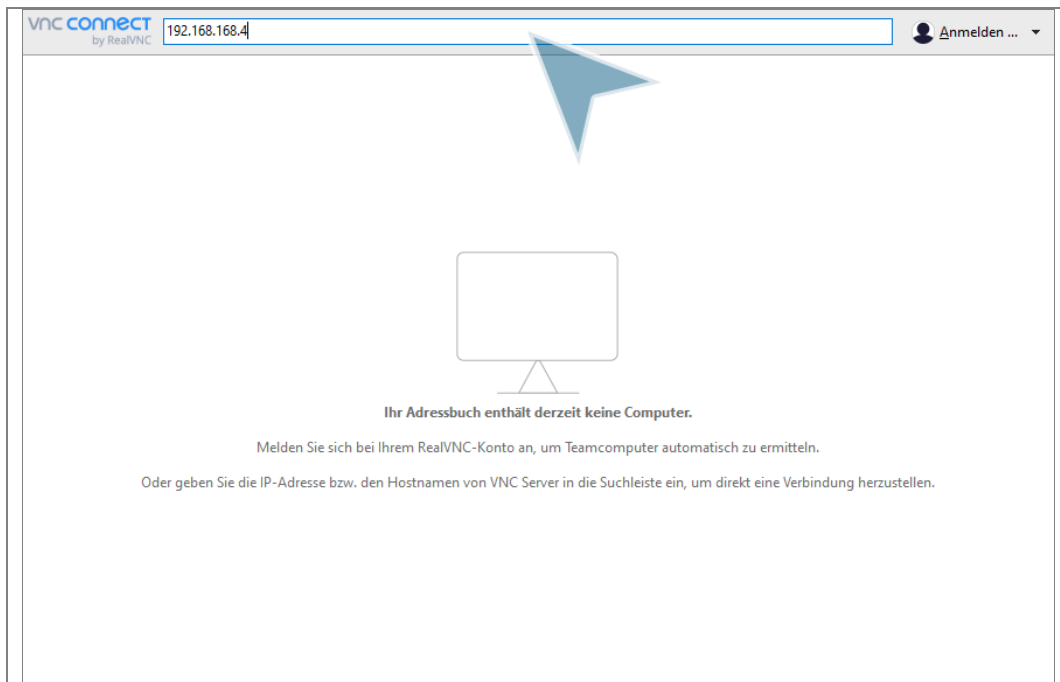
Finish



Reboot



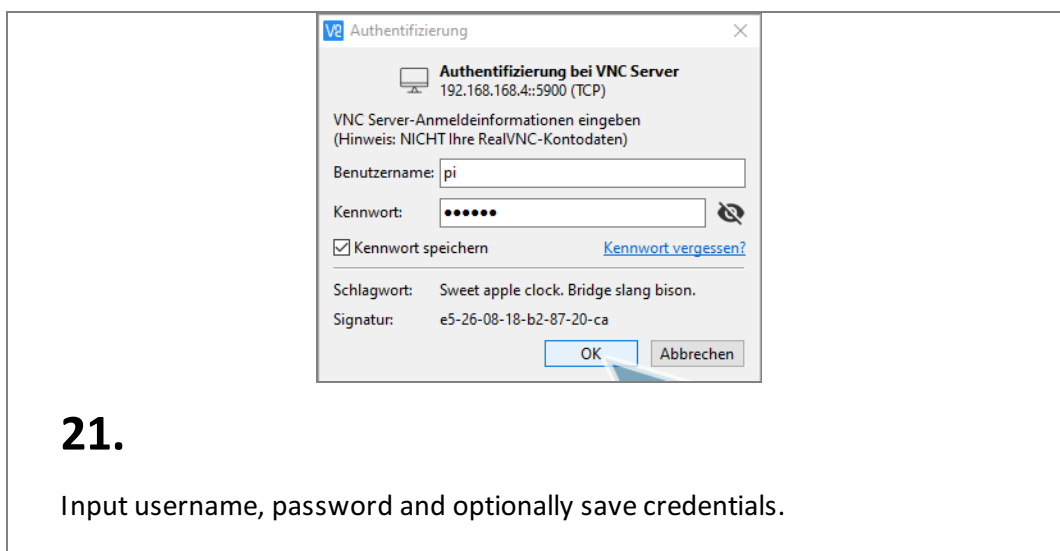
Start VNC Viewer



20.

Type in the IP address of the RevPi

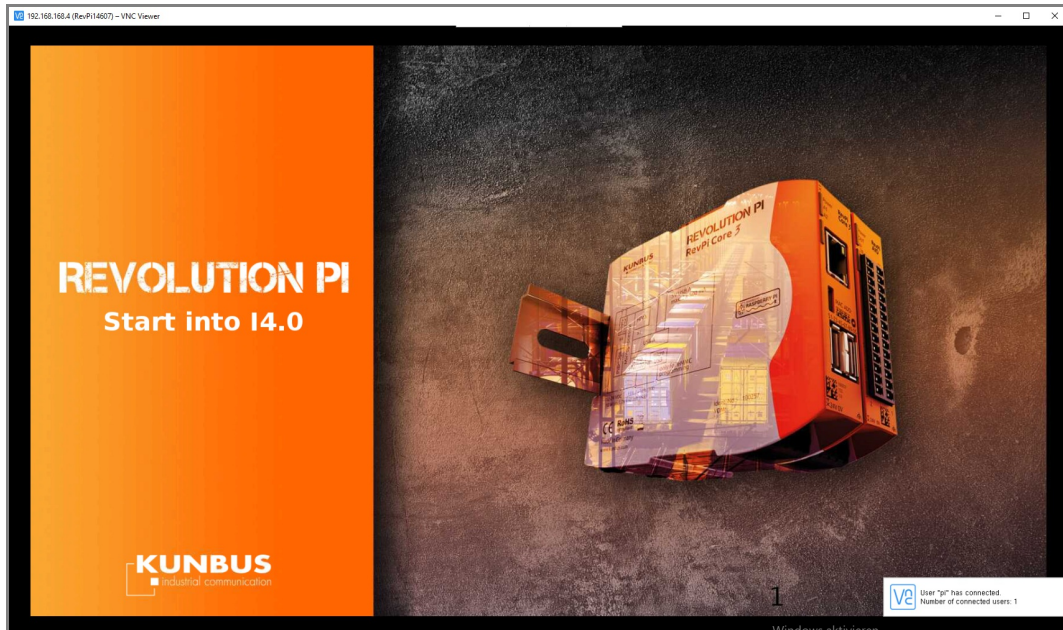
Input Credentials



21.

Input username, password and optionally save credentials.

Done



192.168.166.4 (RevPi4607) - VNC Viewer

REVOLUTION PI
Start into I4.0

KUNBUS
industrial communication

1
Windows aktivieren

User "gp" has connected
Number of connected users: 1

22.

Great, you can view the running slideshow.